



Comments report for **Advanced EDI Colour** - Open

On the Prowl by Malcolm Godde -



Judges Comment: Theo Van der Meulen: This seems to be a duplicate of an earlier image in this group

St Lucian Gray Kingbird by David Woolcock -



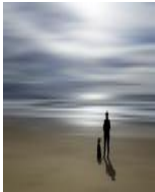
Judges Comment: Theo Van der Meulen: Very good capture of this bird. Good exposure and focus have captured great detail in the bird's plumage. Would suggest removal of the out of focus stem on the right hand side using one of the many removal tools available. Also, a slightly tighter crop to move the bird closer to the tight 1/3 would improve the composition. 13

Forest Kingfisher by Wendy Slater -



Judges Comment: Theo Van der Meulen: Well captured image of this beautiful bird. Good exposure and focus. Good use of shallow DOF. Two suggestions. A tighter crop eliminating some of the negative space and moving the subjects eye closer to the right third, and darkening the branch a little to reduce its dominance. 13

Solitude by Pauline Todd - **Merit**



Judges Comment: Theo Van der Meulen: A very effective image in the 'minimalist' style. The image is totally devoid of any distracting element. The remaining features all combine to direct attention on the person and the dog. A key feature is the way the dog has been captured looking up at the person. Beautiful light and long exposure has resulted in sea and sky being combined almost seamlessly. The shadows cast by the subjects provide the final touch to an impressive image. 13

Fern and Fungi by Deirdre Blunt -



Judges Comment: Theo Van der Meulen: Interesting idea to combine the fungi with fern foliage in a single image. The camera (presumably on auto focus) has been allowed to focus on the foreground foliage, and the shallow depth of field has thrown the fungi out of focus eliminating most of the detail here. As a general rule, the closer a camera is to the subject the more care is required to manage focus and depth of field. 11

Milky Way Arch Lake Bonney by Glenda Black - **Merit**



Judges Comment: Theo Van der Meulen: A great milky way capture. The foreground lake and dead trees are the perfect foreground to the spectacular image of the galactic core. The slight colour in the sky and the moon peeping over the horizon complete and excellent photograph. 13

Sparks In The Tunnel by David Willis - **First Place**



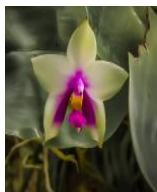
Judges Comment: Theo Van der Meulen: An outstanding example of long exposure and light painting. Setting the action in the tunnel like structure elevates this image compared to what is usually achieved using this technique. Exposure is spot on and has resulted in capturing beautiful colours and features of this scene. 15

Almost Ethereal by Chrissi Miles -



Judges Comment: Theo Van der Meulen: The combination of light (Moonlight?), reflections in the still water and the ghost like trees in the background provides a wonderful setting for the birds and their nests. The overall feeling captured here is one of tranquility and eeriness. 13

Orchid Bloom by Garry Pearce -



Judges Comment: Theo Van der Meulen: A closeup image of the orchid has captured the intricate beauty of the bloom which has a delicate texture and wonderful colours. The bloom is shown in its natural settings which includes the surrounding foliage. Recommend darkening the surrounding foliage to direct more viewer attention to the subject. A slightly tighter crop and a little increase in exposure would further enhance the image. 12

Maternal Love by Yvonne Schnelle -



Judges Comment: Theo Van der Meulen: This image has captured a shared moment between the two gorillas. The facial expression of the dominant gorilla has been beautifully captured. Its companion is turned away from us - it would have been interesting to see at least some of the face. The surrounding foliage is quite bright and could be darkened somewhat in post to create greater attention on the subjects. 13

Yellowbelly by Vicki Cain - **Merit**



Judges Comment: Theo Van der Meulen: This image features chiaroscuro lighting which is used in many master paintings. It has resulted in dramatic contrast between light and dark and beautiful saturated colours. Would suggest a slight crop from the bottom and removal of some of the distraction elements there. Very good still life effort. 13

Silos Unpainted by William Cleverly -



Judges Comment: Theo Van der Meulen: This capture is about the beauty in everyday mundane objects. The silos are the main subject and I think there was an opportunity here to make more of their poor condition. Taken in this soft light, the texture and colour would respond well to some local post processing (contrast, clarity) to increase the drama of the scene. 11

A Hard Life by Helen Bishop - **Merit**



Judges Comment: Theo Van der Meulen: A startling portrait which has been processed to emphasise the features and the 'wear and tear' on this subject. The post treatment has created a 'painterly' quality, While this image would work well in mono, the subdued colour palette chosen here also works well. The background works effectively with the subject. I found that a slight increase in exposure increase the impact of the image. 13

Lighthouse by Jessica Wells -



Judges Comment: Theo Van der Meulen: Classic coastal seascape featuring the never ending onslaught of the ocean on the land. Composition would be stronger if lighthouse and associated buildings were placed further on from the edge (on the right third line for example). Buildings not quite in focus. A little more sky detail would also improve the impact of this image. 12

Colors before Daylight by Donna Rohrich - **Second Place**



Judges Comment: Theo Van der Meulen: In this image, the light is the hero. Beautiful sky detail and colour are reflected in the foreground tidal pool. The beautiful light and the texture in rocks, sky and water have been well captured. 14

Cloudy day by Geoff Bayes -



Judges Comment: Theo Van der Meulen: Well exposed and sharp landscape image. The bridge itself provides a strong diagonal composition which is somewhat unbalanced by the large land mass on the right. Interesting sky and resulting reflections add to the appeal of this image. Great colours.13

Smoke On The Water by Mark Slater -



Judges Comment: Theo Van der Meulen: A striking aerial landscape. The winding river leads the viewers' eye through a landscape featuring different textures and colours. The haze presumably caused by smoke has had the effect of rendering the scene quite soft and has made the colours appear subdued. The impact of the image could be significant increased with a little post processing using the contrast and dehaze tools. 12

Buckland River by David Skinner -



Judges Comment: Theo Van der Meulen: A peaceful engaging scene of the creek and surrounding bush. The viewers' eye is drawn along the river to the point where it disappears around the bend. There is potential to tell a stronger story by focusing on composition and lighting. The area to the left of the light coloured trees does not contribute to the story and I would suggest a crop to the left of these trees. I would also be inclined to crop from the top to maintain the aspect ratio. Further a more dramatic mood would be created by selectively brightening the brighter foliage and slightly darkening the darker greens. 11

Heading Inside by Wendy Stanford -



Judges Comment: Theo Van der Meulen: Street photography in a foreign environment creates mystery and intrigue. We want to know where this is. The edge of the footpath has created a strong diagonal leading line to the subject. Direct overhead light has created the potential to bring out more detail and stronger colour in the facade of the building, which could be achieved by adjustments to clarity and contrast in post. 12

Touting for custom by Jill Hancock -



Judges Comment: Theo Van der Meulen: A classic scene captured in an iconic location with the pyramids in the background. I think the challenge here was, and still is, to elevate this from a tourist snapshot to an image telling an eternal story of life in the desert. To achieve this I would suggest removing all evidence of modernity (tourists and cars) and then to use post processing to emphasise the harsh light and the wonderful colours. Finally the image needs to be rotated clockwise to correct the leaning horizon. 12

Final Approach by Michael Black -



Judges Comment: Theo Van der Meulen: A well executed triptych capturing the arrival of one of the birds. In each image the birds are placed on the vertical thirds leading to strong composition. Would suggest some local pp adjustment to increase exposure on the birds to emphasise the wonderful colours and textures. 13

On the Prowl by Malcolm Godde -



Judges Comment: Theo Van der Meulen: Well exposed and sharp portrait of the leopard. Shallow depth of field works well. At the moment of capture the animal is not engaged in a behaviour which means the image feels more like a portrait. In that case I feel that cropping the image to a portrait orientation concentrating on the head and shoulders would create more impact. 13

Watercolour by Pamela Milliken -



Judges Comment: Theo Van der Meulen: Distinct horizontal layers (fore, middle and background) create a strong composition. Beautiful diffused light create a mood of tranquility. Panoramic POV works well but I would suggest a crop from the right hand side to strengthen the composition. Also suggest a little contrast in post to darken the black trees and create a little more drama in the clouds. 13

Friends by Patsy Cleverly -



Judges Comment: Theo Van der Meulen: Contrast between foreground empty tables and the figures moving away in the background is part of the story here. The hand placed on the shoulder suggests another story element. The light coloured columns to the right are somewhat overpowering and a significant crop here would focus greater attention on the story of the friends. 12

All Alone Am I by Win van Oosterwijck -



Judges Comment: Theo Van der Meulen: A witty well spotted image. The bird seems to be defying the message of the warning sign. Sign is somewhat dominant, would like to have seen more of the bird. Focus and exposure good. 12



Comments report for Photographer EDI Colour - Open

Worship no more by Ian Guthrie -



Judges Comment: Theo Van der Meulen: I think the intent here was to use the tree as a framing device for the church. The image is sharp and well exposed but the tree is quite dominant and leaves the viewer wanting to see more of the building. Shooting the image from a position more to the left and perhaps down would show more of the building framed by the more delicate branches and the lovely green foliage. 11

Magnificent by Robin Elliot -



Judges Comment: Theo Van der Meulen: This image tells the story of the enduring strength of this gum tree. Its gnarled trunk and sprawling canopy convey a sense of age and resilience. Overall the image appears quite hazy which has led to give the scene a soft romantic feeling. 11

Threatning by Judy Hofmeyer - Merit



Judges Comment: Theo Van der Meulen: This image features a classic approach to landscape composition using layers. The freshly tilled earth in the foreground leads the eye to the middle ground of trees and building and then to the mountains and sky beyond. Having captured the image there is a lot potential to improve it. For example the area around the farm could be brightened selectively draw the eye and take advantage of the colours we see there. I also found that cropping out about 1/3 of the foreground created a more balanced composition. 12

I See You by Joanna Rath -



Judges Comment: Theo Van der Meulen: Shallow depth of field has created a blurred background allowing us to focus on the subject. Well exposed and sharp. There is a hint of detail in the eye, and I would suggest a local adjustment to brighten it a little - it is the key element of this image. There is a lot of negative space in the image which could be addressed by either cropping from the right to place the subject on the right 1/3 line, or changing the aspect ratio to portrait mode. 11

Tassie Devil by Debbie Burt - Merit



Judges Comment: Theo Van der Meulen: The image evokes a sense of raw untamed action. The subject is well exposed and sharp where it matters. The surrounding details quite bright and competes visually with the subject. Suggest using selective darkening of this area. Would also suggest removing the chain to decrease the sense of captivity. 12

Towering Cumulus by Bill Thompson - First Place



Judges Comment: Theo Van der Meulen: A spectacular cloud formation has caught wonderful light to create an impressive sky scape. The control tower in the foreground anchors the image. The image is well exposed to catch the beautiful colours. From a composition point of view I would like to have seen more of the building. 14

Getting Away by Mary Singh -



Judges Comment: Theo Van der Meulen: I can understand not wanting to get too close to this subject and this has resulted in a less than ideal shooting position. The snake is moving away from the camera and the head is largely obscured by grass. Under the circumstances I understand why most of the image is out of focus. 10

Hot work by John Robertson - **Second Place**



Judges Comment: Theo Van der Meulen: An environmental image where the subject is engaged presumably in glass blowing. The composition is strong and we can almost feel the heat coming from furnace. Couple of technical issues. The figure is over exposed and not quite sharp - a bit of motion blur perhaps. The story here is strong. 13

Light as a feather by Rhonda Hansen -



Judges Comment: Theo Van der Meulen: The juxtaposition between the feather and the surface it is resting on creates an interesting contrast. Shallow DOF works well here but would suggest a slight crop from the top to reduce the out of focus area which dominates the image. 11

Window To The Golden Hour by Ishani Booms - **Merit**



Judges Comment: Theo Van der Meulen: Using the buildings as silhouetted foreground against the golden sky works well here. The overall size occupied by the building creates a somewhat unbalanced composition and a lot of negative space. A stronger composition would have been achieved by cropping from the left to a point between the two large windows. 12



Comments report for **Advanced EDI Monochrome** - Open

Bell Boeing V22 Osprey by David Woolcock -



Judges Comment: Theo Van der Meulen: The Osprey is a unique aircraft and this image has effectively captured its unusual features in a dynamic way. Effective composition with no distracting elements. As a B&W image it lacks a bit of dynamic range resulting in a lot of grays. A little adjustment to exposure and contrast in post would create an image with more drama and impact. 12

Historic Drop Log Shed by William Cleverly -



Judges Comment: Theo Van der Meulen: I think the aim of this image was to capture a sense of abandonment and decay. The sky is featureless and although it is either late in the afternoon or early in the date the light has created a glare. Shooting this structure on a cloudy day would create more interest in the sky and the resulting softer light would result in a more subtle rendering of the details and textures. 10

Watching by Yvonne Schnelle -



Judges Comment: Theo Van der Meulen: Well captured image of the leopard. Good light and exposure has captured the subject's features and details well. A little more space on the left would improve the composition. The surrounding branches and vegetation draw the eye away a little from the subject. Darkening the surrounding areas would make the leopard more prominent. 12

Mountain Top by Garry Pearce - **Merit**



Judges Comment: Theo Van der Meulen: In this image, the aerial point of view of the snow capped mountain emerging from the clouds has created a sense of awe and majesty. Try a little increase in contrast and/or clarity. In any case an impressive B&W image. 13

The Ole Slab Hut by David Willis -



Judges Comment: Theo Van der Meulen: This image captures a sense of history and endurance. A well chosen shooting position reveals a great level of detail of the building. The predominance of grey tones suggest that significant improvement in the tonal range could be achieved with adjustments to exposure and contrast 12

Strength in Adversity by Win van Oosterwijck -



Judges Comment: Theo Van der Meulen: This portrait has captured the subject at a moment which suggests weariness, dignity, and deep thought. The shallow DOF ensures there are no distracting elements. From a light/exposure point of view all the information is there to create real drama in post by subtle adjustments to contrast and tonal range. 12

Get the Ball by Glenn Rose -



Judges Comment: Theo Van der Meulen: Image has captured a moment of peak action. Strong composition for an action shot with all the players' attention converging on the ball. Good control for depth of field and a fast shutter has frozen the action. Would recommend a local adjustment to increase the exposure on the faces of the two central players. 12

Smokey by Patsy Cleverly - **Merit**



Judges Comment: Theo Van der Meulen: This image evokes a sense of both destruction and ethereal beauty. The sunbeams piercing the heavy smoke add to the powerful narrative. B&W conversion has been well done resulting in a pleasing range of tones. A difficult lighting situation well handled. 13

Lost in a Book by Vicki Cain - **Second Place**



Judges Comment: Theo Van der Meulen: This still life image creates a sense of old world charm, intellectual pursuit and natural beauty. Managing light effectively is an essential ingredient of still life images and the maker of this image has managed the light well. My only suggestion to take the image further is to show just a little detail in the dark background which occupies nearly half the image. 14

Into the Mist by Donna Rohrich -



Judges Comment: Theo Van der Meulen: A mysterious and quiet scene. The fog rising from the water makes us feel like we are intruding on a hidden scene. Overall the composition is strong and the mist separates the foreground from the background. Suggest a small crop from the left to a point just to the left of the tree. Well done. 13

Waiting for the Migration by Malcolm Godde -



Judges Comment: Theo Van der Meulen: In this image of wildebeest migration the narrative is one of wide open spaces and the huge number of animals. The wide angle of view does convey a sense of space but this also means there is no compelling point of attention to direct the viewer. From a B&W tonal perspective the image is a bit flat. Some selective PP treatment to increase overall contrast and to direct the viewer's eye to the main group of animals would improve the image, 11

Just waking up by Chrissi Miles -



Judges Comment: Theo Van der Meulen: A pelican in a tree - an unusual sight. There are two issues here. The entire image is soft presumably through lack of focus and the pelican itself is over exposed. Together these two issues have resulted in lack of detail in the feathers of the subject. 10

Poetry in motion by Glenda Black - **First Place**



Judges Comment: Theo Van der Meulen: This image has captured the bird in a way that shows the viewer the graceful movement and the beauty of the subject. Great light and good control of shutter speed and aperture have captured every detail and ensured there are no distraction elements. Beautiful image. 15

Amongst The Trees by Wendy Stanford -



Judges Comment: Theo Van der Meulen: An evocative landscape well captured in this image. The B&W treatment complements the feeling of winter and isolations. Suggest a slight crop on the left (to the edge of the tree, and a small amount of sharpening. 12

Darter Touchdown by Michael Black -



Judges Comment: Theo Van der Meulen: This image captures a dynamic sense of energy and movement. Use of a fast shutter speed has frozen the subject and the water. Black and white conversion is a good choice but could be improved. Most effective B&W images display a good range of tones from black to white. In this image grey tones predominate despite some areas which should be white e.g. the bird's body and the waters splashed. Easily adjusted in post. 12

Ready for Renewal by Deirdre Blunt -



Judges Comment: Theo Van der Meulen: This image is a good example of the effect of directional lighting to highlight texture. The brightly lit stalks in the centre are sharp and well exposed and show a lot of detail. The composition could be improved by reducing the amount of negative space in the image and I would recommend a portrait oriented crop concentrating on the well lit stalks and largely eliminating the darker out of focus stalk. 11

A sacred place by David Skinner -



Judges Comment: Theo Van der Meulen: Fog can turn the ordinary into the extraordinary, particularly in mono. The lone tree in the foreground creates a beautiful contrast with the buildings in the distance, and the street curving through the image is a strong compositional element. The street lamp also adds an atmospheric element. Would have preferred to see the tree rendered a bit more sharply and as a challenge I would recommend removing the two traffic signs which detract a little from the mood. 12

Evil Eye by Wendy Slater -



Judges Comment: Theo Van der Meulen: I hope a fairly long lens was used to capture this close up view of the reptile. At this range the camera has captured a lot of great detail in the subject but lighting conditions and exposure settings have resulted a dark and fairly flat image tonally. The view chosen here shows us the scary bits of the crocodile but I would have preferred to see the camera moved to the right to show the eye and the rest of the snout, 11

closed today by Geoff Bayes -



Judges Comment: Theo Van der Meulen: The elements in this image, the fence, the church and the dramatic sky, combine to create a dramatic scene. The foreground gate suggest the church is protected or guarded. I wondered what the composition would look like if the shooting position had been a little to the left placing the door in the gap between the two gates. As it stands the brooding impact of this image could be enhanced by increasing contrast to get closer to white in the building and the clouds. 12

Dahlia in Black by Pauline Todd - Merit



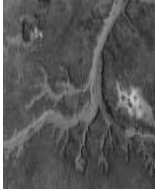
Judges Comment: Theo Van der Meulen: Photographing a flower in B&W is a daring venture as we discard the flowers most spectacular quality - its colour. The challenge then is to use our photography skills to emphasise other attributes such as shape and texture. This image demonstrates significant skill with lighting, camera management and post processing to produce this mono rendering of the beautiful Dahlia.13

On the water by Jill Hancock - Merit



Judges Comment: Theo Van der Meulen: Not sure exactly how this image was produced but it is very effective. I suspect intentional camera movement is part of the story, but in any case the final result which resembles a charcoal drawing is strong and simple. Well done. 13

Erosion by Mark Slater -



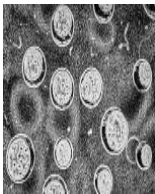
Judges Comment: Theo Van der Meulen: Aerial images can sometime reveal interesting shapes and patterns and we see plenty of those here. Most aerial shots depend on colour to augment the appeal of the shapes and patterns. In this B&W rendition we are faced with the challenge of highlighting the beauty of the scene without colour. In B&W images we depend on revealing or manipulating the tonal values of a scene to create the impact and the drama. This image is underexposed and features only similar shades of grey. In post, adjustments to exposure, contrast and clarity would result in significant improvement in the the drama and beauty of this aerial scene. 10

Frosty morning by Pamela Milliken -



Judges Comment: Theo Van der Meulen: A striking mood of starkness and solitude created by fog and well captured by the maker. The composition featuring the road in the foreground is strong and balanced. There are no distracting elements. The black and white tonal range suits the mood but I would be tempted to try reducing the blacks a litte. 13

What am I by Jessica Wells -



Judges Comment: Theo Van der Meulen: It was difficult to evaluate this image, presumably it was shot through a microscope. As there are no familiar features which could form a recognisable composition it could be considered an abstract image. Finally I concluded it was a scientific record and its merit should be assessed by someone who understands what is revealed here. 11



Comments report for Photographer EDI Monochrome - Open

Court house by Debbie Burt -



Judges Comment: Theo Van der Meulen: The tilted camera position here is a positive. It strengthens the foreground fence as a strong compositional element which creates a boundary and a sense of exclusion - we are looking in from the outside. Because B&W photography excludes colours, it is important to create contrast and interest with the black and white tonal range. In this image everything other than the fence is a shade of grey. A little work in post to extend the tonal range (using contrast and clarity) would significantly increase the impact of this image. 12

Heading Home by Joanna Rath -



Judges Comment: Theo Van der Meulen: This image has captured a peaceful narrative. The boat and its occupants, seen here in silhouette, evokes a sense of isolation and shared experience. From a composition point of view both points of interest, the boat and the sun are placed quite close to the border of the image, a little more space in both cases would create a stronger composition. 12

Taking a Splash by Bill Thompson - **Second Place**



Judges Comment: Theo Van der Meulen: Dynamic motion is captured here by the 'freezing' of the splashed water. The fact that the action is captured in the reflection in the puddle adds another interesting aspect to this image. Exposure and B&W conversion are good but I'd suggest trying a slight increase in contrast. 14

Another time by Rhonda Hansen -



Judges Comment: Theo Van der Meulen: Photographing existing art is always a challenge particularly when it occupies so much of the frame. The challenge for photography is to show the art in the context of a new environment which shows the interaction between the art and that environment. In this case that could be achieved by a more distant shooting position which shows more of the surroundings, or introducing another element such as a human subject admiring the art on the silos. 12

Silent Strength by Ishani Booms - **First Place**



Judges Comment: Theo Van der Meulen: This is a powerful portrait which tells the story of resilience and a life of hardship. The mono treatment has been well handled although a small increase in contrast would be effective. The subject's gaze, directly at the camera makes a powerful connection with the photographer. The essence of street photography is there in this image, but I suspect the image could be further improved by experimenting with different crops. 15

Afternoon light by Ian Guthrie - **Merit**



Judges Comment: Theo Van der Meulen: In this image the verandah in the foreground has been used as an effective framing device for the interesting house across the street. Exposure has been well handled and the B&W conversion is well done resulting in a good range of tones. The shadow in the foreground, from an adjacent lamppost has added an interesting element. Suggest a slight crop from the right to eliminate the gap between the end of the verandah and the border. 13

Whats in here by Judy Hofmeyer -



Judges Comment: Theo Van der Meulen: The main subject here is the small bird to the left of the image. It appears to be exploring the space in the rocks for shelter or food. However the overall scene contains a lot of detail which gets in the way of that story. The bird is very small in the frame, and a closer point of view and perhaps a different shooting position would have been more effective. 10

What left after the fires Kangaroo by John Robertson -



Judges Comment: Theo Van der Meulen: Despite the title, this image conveys the narrative of vastness, and isolation rather than destruction. The detail in the scene is not readily obvious as the focus is quite soft. This together with the totally featuresless sky makes it difficult for the viewer to find a point of interest. 10
