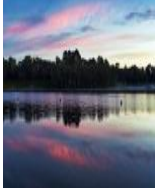




Comments report for Advanced EDI Colour - Open

Crack of Dawn by Pamela Milliken - Accepted



Judges Comment: Eugene Dopheide: Vibrant colour of the early morning in the waterscape. The symmetrical balance created through background and foreground and horizontal flow through the image imparts a soothing, calm mood. Lovely image, 11.

A Turkish bath by Chrissi Miles - Accepted



Judges Comment: Eugene Dopheide: Good positioning of the camera and POV, to give the viewer a bird's eye view of the action, presumably of the bird's take-off. The shutter-speed slow enough for a blur of the wings and linear texture of water drops as jagged lines contribute to the frenzy in the scene, yet good depth of focus, background revealing but unobtrusive. The bird's body reasonably sharp and detailed with the soft side-light filtering through enhancing action of the wings. A slightly faster shutter-speed may have been more effective in giving form to the wings and sharper focus on the water drops, maybe something to explore later. Good use of warm side lighting and camera settings to capture the action. 12.

Just Resting by Sharon Alston - Accepted



Judges Comment: Eugene Dopheide: Lovely sharp image of a kookaburra, pleasingly captured on the 1/3rds line with muted green foliage as the backdrop. The bird is perched on a curved branch serving as a line leading into the image. Unfortunately the catch-light in the eye is not strong, and maybe a little work in post, brightening, could remedy, as that adds to the life effect in animal images. The balanced composition with the subject on the 1/3rd line works well. 12

Jess by Win van Oosterwijck - Accepted



Judges Comment: Eugene Dopheide: Lovely portrait of the lady, with the hat as a diagonal line to compliment the warm soft side light from the right, Rembrandt lighting of her face. Sharp throughout, maybe a brightening of the eyes with a wider aperture could have resulted in a softer feel, the ear with the pin sharp ear ring pulls my eye from the eyes, diminishing effect. Lovely portrait enhanced by the soft warm side light for effect. 11.

Luftwaffe Typhoon by David Woolcock - Accepted



Judges Comment: Eugene Dopheide: This visual mass of the aircraft with sharp focus and detail is imposing, but it feels like a composite, that it was added, no feeling of speed of travel through selective blurring, such as panning with a slower shutter-speed. Selective blur whether in camera or in post-process may result in an image which is about something rather a picture of something, an airplane flying at speed vs a picture of an aircraft. Beautiful sharp detail of an aircraft. 11.

New Zealand Blue by Garry Pearce - Accepted



Judges Comment: Eugene Dopheide: Very sharp and love the colour, do they glow in the dark? If not, it must have been done so in post-processing, the effect doesn't look natural with the dark background. Nice and sharp. 10.

Rising Clouds by Patsy Cleverly - Accepted



Judges Comment: Eugene Dopheide: Good depth, foreground, middle and background, but would maybe be more effective with a landscape crop. Good colour, depth, and depth of focus. 10.

Eagle Eyes by Glenda Black - Accepted



Judges Comment: Eugene Dopheide: WOW, all birds sharp and an odd number, with the smaller birds of prey framing the largest bird, a wedge-tail, I imagine. A reasonable attempt at compositing the birds, although depth of focus varies from one bird to the next. Too bad the wedge-tail isn't looking at the camera, but a very respectable image composited here. 12.

Woodland Kingfisher by Wendy Slater - Accepted



Judges Comment: Eugene Dopheide: Good composition with bird slightly off-centre, and the diagonal lines with in the frame. Depth of focus could have been better with a smaller aperture, branch out of focus. The image may benefit from a 1 or 2 stop increase in exposure. Like your composition with the bird facing the camera and the glint in it's eye. 10.

Fruit Of The Vine by David Willis - Accepted



Judges Comment: Eugene Dopheide: Sun rays coming through a window spreading a warm glow on the main subject, and adding depth to a well focused image. The red signs are a little distracting and maybe could be deleted in post, but not critical. Some of the barrel lids are well focused while others on the same plane of focus are unsharp with distracting textures(2nd of four row of barrels from the top). The concept and camera application is well planned and the grungy golden light rays work well. 12.

The Survived In The Kimberley by Rod Alexander - Accepted



Judges Comment: Eugene Dopheide: Foreground has physical mass and, therefore impact as a leading line into the image. The POV(point of view) and use of wide angle optics generates physical mass and the tight crop creates tension within the image. A slight crop on the right to eliminate the tree distracting on the upper right corner, maybe, but the positioning of the camera and lens optics to achieve effective composition has been employed well. 12.

Autumn Thoughts by Helen Bishop - First Place



Judges Comment: Eugene Dopheide: Digital Art at it's finest, a great creation; love the soft earthy tone, yet sharpness of the eyes, the diagonal lines, the depth. An image with mood, with story, what more can I say, 15, 1st place.

Day Dreaming by Mark Slater - Accepted



Judges Comment: Eugene Dopheide: Nice sharp focus and lovely colour & texture in this animal portrait; suggestion square crop, it's about the face, every thing else is superfluous. A shallower DOF to minimise the vegetation and distractions from the face, maybe, beautiful portrait. 13

Autumn by Jessica Wells - Merit



Judges Comment: Eugene Dopheide: Great capture of nature's colour palette, the use of converging line. The only thing missing is the human element at the end of the tunnel. Nice soft texture, but good depth of focus, perfect for the art you've created. 14, merit.

Balloon over Luxor by Jill Hancock - Accepted



Judges Comment: Eugene Dopheide: Striking simplicity, vivid saturation of colour creating silhouetted foreground. A slight crop of top and bottom and the left side to hone in on the subject and create a symmetrically balanced composition maybe, but probably not essential. Good work. 13

The Lost Avenue by Pauline Todd - Accepted



Judges Comment: Eugene Dopheide: Creating 'ART' through composite processing to tell a story with impact. The dark background layer acts like a vignette to hold attention to the subject; moody contrasting layers for effect. Dark muted tones of the background, supporting the glowing, split-tone colouring of the subject. The textured desaturated splotches are maybe a little distracting and could benefit from a blending mode to reduce their presence. A very creative work sound in concept and aesthetically pleasing tone for impact. 13.

Gunbower Billabong by William Cleverly - Accepted



Judges Comment: Eugene Dopheide: Familiar scene in the Australian landscape, good depth captured in this waterscape with lovely colour tones. Rough texture in the tree trunks and variation in vegetation colour enhance the effect of depth. 12.

Old Truck in Tocumwal by Glenn Rose - Second Place



Judges Comment: Eugene Dopheide: Signs of antiquity and obsolescence in a tightly cropped image, good use of wide optics with shallow DOF and muted colour for effect. The composition has an interesting feel of flow from door handle to steering wheel to the sharply focused keys in the ignition and the converging of the dashboard leads the eye to the other door, pushing the eye back to the point of focus. The over-exposed background blots out detail and effectively pushes the eye back onto the subject. A unique creation with impact due to composition and muted analogous colour. 14, 2nd.

Sea side village by Malcolm Godde - Accepted



Judges Comment: Eugene Dopheide: Typically European, Mediterranean city-scape, warm analogous colours on a rugged coastline. The human element used effectively to give a sense of scale and the elevated POV and camera positioning minimise the human element. Tightly cropped maybe with a few distractions on the edges do not significantly detract from the story being told. Effective use and predominance of warm muted analogous colour carry the image. 13.

Facin' the Door by Vicki Cain - Accepted



Judges Comment: Eugene Dopheide: Symmetrically balanced with muted colour and texture, but the tight crop with a slight tilt of the verticals to the right counter the feeling of balance. The muted colour, depth and texture convey architecture of antiquity. 11.

Southern Aurora Lake Mulwala by Michael Black - Accepted



Judges Comment: Eugene Dopheide: Australia has seen the appearance of the aurora on several occasions this Winter, which has been captured beautifully here. The silhouetted trees with pink tones in the night sky reflected in the waterscape. The image feels truncated because of tight cropping on bottom and both sides, and the big sky begs for more to give balance to the scene. Beautifully captured with brilliant colour. 11.

Bright Communication by David Skinner - Accepted



Judges Comment: Eugene Dopheide: Beautiful capture of morning light in misty, hilly landscape; lovely variation in the tone of the light as it reflects off the silhouetted landscape. The composition crop just feels a bit tight at top and bottom, a case where more is needed for the sweeping line of the foreground hill reaches the corner of image, with more room to breathe at the top. Lovely soft tones in golden light. 12.

Eugene Dopheide: Beautiful capture of morning light in misty, hilly landscape; lovely variation in the tone of the light as it reflects off the silhouetted landscape. The composition crop just feels a bit tight at top and bottom, a case where more is needed for the sweeping line of the foreground hill reaches the corner of image, with more room to breathe at the top. Lovely soft tones in golden light. 12.

Eagle Hunters by Wendy Stanford - Accepted



Judges Comment: Eugene Dopheide: Well taken, technically correct travel image, with vibrant colour tones gives impact to the horsemen suitably dressed for a hostile cold environment. Sharp with good depth of field(DOF) the horsemen have presence and physical mass as the hero in the story, a bit more of the environment may have improved on the story. Sharpness and vibrant colour tell the story of travel in a distant land. 12.

Sunwapta Falls by Donna Rohrich - Merit



Judges Comment: Eugene Dopheide: A rugged landscape image with water flowing into a waterfall, challenges the photographer to set a shutter-speed with just the right amount of blur for effect, and is usually set as a matter of taste. Here the escarpment contrasts beautifully with the silky smooth texture in the water, and the symmetrical balance in the composition works well and the human element gives context to the scene. A tilt to the right feel of the horizon line, maybe detracts from the image, but it still has impact with good foreground, middle and background. 13, merit.

Starting to Open by Deirdre Blunt - Merit



Judges Comment: Eugene Dopheide: A rose is a rose, but this is a magnificent capture of a rose in detail, with depth and beautiful colour tones. The soft background enhances the sharp depth of focus, not usually achieved as close-up as this one. Maybe a layer stack, the result is an image with impact. 14, merit.



Comments report for Photographer EDI Colour - Open

Cactus Flower by Rhonda Hansen - First Place



Judges Comment: Eugene Dopheide: Excellent use of a wide aperture and colour to create an image with warmth and a soft feel. The use of an analogous colour scheme gives a warm feel to the image, adjacent colours on the colour wheel define analogous colour. The use of an aperture wide open and getting in close yields the soft feel in an image, either or both employed here to great effect. Love it, 15, 1st place.

winter season by Judy Hofmeyer - Merit



Judges Comment: Eugene Dopheide: Vibrant colour and good depth of focus give the image impact. The pearl adds sophistication and the water droplets add repetition to the smooth lines of the flower petals. Adding the black background helps the subject pop, but, has maybe a hint of fringing on the edges of some petals, a lovely created image, with impact 14, merit.

Two Ducks by Mary Singh - Accepted



Judges Comment: Eugene Dopheide: The subject is sharp with texture in the plumage, but the colour scheme seems to have a green tinge giving an unnatural feel to the image, computer may need colour correction. Maybe a little too tight in the composition crop; subjects, especially wild ducks need room to move or they will fly off. Wildlife need a slight glint in the sharp eye both achieved in your image, 11

Mossman Gorge by Debbie Burt - Accepted



Judges Comment: Eugene Dopheide: Good composition, with leading line from the tree on the left framing the flowing water. A 1 stop reduction in exposure, or more, may cure the over-exposed rock and water rapids, and add mood to the image. Correct exposure for your images may or may not result in a perfect histogram, correct exposure is that which helps you achieve the image you like. Well seen and composed image, maybe just a little dodging/burning in post-process to achieve effect. 12

Groynes At Sunrise by Joanna Rath - Accepted



Judges Comment: Eugene Dopheide: A challenging scene as the sun peeks through the clouds, looks like sun setting. Warm colours bathe the seascape as a wooden structure competes with nature for space. Gritty texture and crisp sharpness in the timber might add to the story, but a boost in contrast, increasing the black and whites should improve the result. Calm and solitude is the message from the horizontal lines of the composition and pastel colour throughout. 13.

The Ultimate by Robin Elliot - Second Place



Judges Comment: Eugene Dopheide: Symmetry of composition and exposure to light, the light is not harsh and colours true. The door and windows give a sense of scale to the viewer and the crispness in handling of the whites compliment the blue tones of the sky and water. Portrait mode is perfect for the symmetrical composition and the exposure to light is well handled to the result, a beautiful image of a light house. 14, 2nd place.

Tabletop Tempest by Bill Thompson - Accepted



Judges Comment: Eugene Dopheide: Good capture, lovely colour with the lightning striking the earth, but is it a picture of an impending storm, or about a storm? If it is about the storm, not a picture of it, we need to show it; to create mood through our camera settings & post-processing to create mood. I have been a follower of David duChemin for several years now, and recommend his postings in Instagram. He does not concentrate his efforts on camera settings, but rather the aesthetics of image making and creating an image about something, rather than of something. This image, I think has drama potential to be exploited in post-processing, to achieve what the scene is about. 12

Day at the races by John Robertson - Accepted



Judges Comment: Eugene Dopheide: Image is nice and sharp in parts, with good colour control, but a tighter aperture may have resulted in pin-sharpness to all parts of the vehicle, which is stationary. All other settings remaining the same it may also result in a drop in the highly exposed image, taken in the middle of the day. Minimal colour and the nice black and grey tones give impact to the subject. 12.



Comments report for Advanced EDI Monochrome - Open

Denelect by Patsy Cleverly - Accepted



Judges Comment: Eugene Dopheide: Employing a low POV with depth and pleasant toning in monochrome, a lovely image is created. The image foreground, middle and background contribute to the story effectively. Business within the image is used enhance the story of deterioration, and the clutter is composed to form a frame around the subject of the image. Well composed! 12

Lake Tyrell Viewing Platform by Glenda Black - Accepted



Judges Comment: Eugene Dopheide: The platform is simple symmetrical in composition. The whites seem to dominate the image and it may benefit from 1stop exposure reduction, as they lead my eye away from the subject, rather than complimenting the image composition. Keeping an image simple and uncluttered is a great way to pass on the intention of the maker in making of the image. 11

No Longer Useful by Rod Alexander - Accepted



Judges Comment: Eugene Dopheide: Good use of side lighting from a low POV and wide angle lens yields depth in this image. Selective focus with a wide-open aperture may improve the image, by reducing background clutter. A busy image with impact and depth through effective use of POV, wide lens optics and soft, filtered light. 12

Fine Lines by Vicki Cain - Accepted



Judges Comment: Eugene Dopheide: Symmetric composition of the hero with texture results in an image with appeal and the feel of antiquity. The leak of light through the roof may be a distraction, but, I think it adds to the feeling of antiquity. An image with mood and story, created with texture and simple composition, evidence of good processing skills in camera and in post-process. 12

Standing Against The Weather by Wendy Stanford - Accepted



Judges Comment: Eugene Dopheide: Enduring the ravages of nature is the story, good toning in B&W. I think there is more story on the left in this landscape image, that may have been lost through too heavy of a crop on the left and maybe both sides, that changing POV may remedy. A pleasing image with Good exposure and B&W tones. 12

Chic to Chic by Garry Pearce - Accepted



Judges Comment: Eugene Dopheide: Good B&W tones of the foreground subjects, but it has the feel of a composite image. Regardless of whether it is a composite image or not, it should not look like a composite; foreground subjects need to blend with the middle and background of the image to create a natural flow. Attention to detail in processing in post is critical to create an effective work. With more work in post-process, an effective image could be produced. 11

Rocky Country by Jessica Wells - Accepted



Judges Comment: Eugene Dopheide: Lovely composition in a portrait crop, with depth control. The sky could maybe be cropped a little more to avoid competition with your subject, as the eye is drawn to the foreground, then the sky, which is where it may stay given the contrast in light found there. Beautiful sky, but it is not your subject. Good tone control in your landscape, with use of wide optics to give the landscape depth, foreground, middle and background. 12

Family Five by Wendy Slater - Accepted



Judges Comment: Eugene Dopheide: Exotic animals always evoke attention, and this is no exception. This image could be improved with a boost in contrast by increasing the whites and maybe the blacks. It feels a little underexposed and lacks separation between the subject and the vegetation, probably brought on with limited Depth of Field of a long lens. Just a little more work should improve this nicely composed image. 11

Bank by Night by David Skinner - Accepted



Judges Comment: Eugene Dopheide: Well exposed sharp architectural image, with converging lines drawing the viewer into the image. Distraction by what looks like graffiti on the building could be deleted in post-processing, particularly that on the bottom edge of the building, highly distracting. Sharp with good tonal range, Blacks in the sky & Whites are controlled to prevent loss of essential detail. 13

Valley Mists by Pamela Milliken - Merit



Judges Comment: Eugene Dopheide: Nicely crafted imaged with jagged leading lines and good tonal contrast, particularly from the left side sun rays, lighting the valley of this landscape. The dark tones of the clouds and foreground contrast nicely with the soft light hitting the valley. Detail seems to be lost in the background sky, but it does not distract and is a product of the exposure necessary to highlight the middle-ground valley. The light tones in the middle-ground provide a place of interest for the eye to settle on and draw the eye back as it explores details in foreground and background; the dark clouds balance the dark foreground, keeping the eye focused on the subject, the high-lighted valley. 13, merit.

Foggy Morning by Sharon Alston - Accepted



Judges Comment: Eugene Dopheide: Taken at a time of day when the mist clings to the valleys. Exposure is nicely handled, but I suggest the amount of bright sky pulls the eye from the subject. Composing with more foreground and less sky or maybe a panorama crop with less than 1/3rd sky would increase the impact in the landscape. The high contrast in the image has been well handled, and it would be good to go back and have another go at composition. 11

Airbus A400M Atlas by David Woolcock - Accepted



Judges Comment: Eugene Dopheide: Wonderful choice of shutter speed create the motion blur of the propellers, and the tones of the aircraft are subtle with out being flat. Another stop of exposure may have allowed for more detail in the underside of the aircraft, particularly the wheel assembly. The motion blur handled to perfection and inclusion provides context to taking off of the aircraft. 13

Serene Sunset Lake Bonney by Michael Black - Accepted



Judges Comment: Eugene Dopheide: Lovely mirrored image of the waterscape and reflections, but it presents as a little underexposed. One stop increase in whites may lift the tonal contrast, as the image appears a little flat; concern about the sunlight shouldn't blow out the highlights. Pleasing image with symmetrical balance employed in composing the scene. 12

Colin Browne by Win van Oosterwijck - Accepted



Judges Comment: Eugene Dopheide: The writing on the hat is sharp enough, but a smaller aperture is needed here to yield depth of focus in the portrait. The smaller aperture may also reduce the over-exposure of the image and the loss of detail in the subjects beard. Glasses usually detract from the effectiveness of an image, which is the case here. Human portraits may be difficult to master, but keep trying to capture the subject's personality for effect. 10

Sail Away by Chrissi Miles - Accepted



Judges Comment: Eugene Dopheide: Your subject is sharp and clear, but the brightness of the overexposed sky competes and draws the attention. A crop from the top, cropping out most of the sky would eliminate the distraction; crop to a panoramic view, maybe even some of the bottom, may result in something you will prefer. Good camera work here, just needs refinement in post-process. 12

Winding Its Way by David Willis - Accepted



Judges Comment: Eugene Dopheide: Like your leading lines and composition, although a crop to panorama may eliminate the competition between sky and the landscape. Always consider 'what is your subject?', you really have two images here competing for attention. Tonal contrast and sharpness may be overdone, but that is a matter of taste. Good camera work in capture, needs refinement in post-process to achieve results. 12

Resting by William Cleverly - Accepted



Judges Comment: Eugene Dopheide: She is proud of and loves her dog, and good B&W tones and DOF sharpness gives the image impact. The square crop maybe doesn't work best here as the dog doesn't have viewing room to move. Since the faces are not close together the crop feels a bit tight. You've captured the moment for the subject with DOF and impact through tonal contrast. 13

The Cottage by Pauline Todd - Accepted



Judges Comment: Eugene Dopheide: Monochrome tones applied give the image an old world feel, but this is not enhanced by distractions on the edges of the image. The border I feel does not enhance, but distracts, and a crop from the left to the end of the steps would get rid of the bright distraction. Good exposure control at capture with dappled light and monochrome tone make for a pleasing image. 12

Across Lake Hume by Deirdre Blunt - Accepted



Judges Comment: Eugene Dopheide: Lovely landscape begging, maybe, for a panorama crop to eliminate distraction at top and bottom. Your subject is the middle-ground and the foreground and background compete with high tonal contrast dominate with visual mass by taking up more than 1/2 the visual space. Cropping in post-process may be necessary to achieve effective results of good camera work as shown here. 12

Steam Gauges by Glenn Rose - First Place



Judges Comment: Eugene Dopheide: An image about shapes and repetition and toning to achieve impact, although the bright reflection in the bottom left may be a little distracting, a matter of choice. Good B&W tones with detail in the shadow, and the square-ish crop works. Depth in the composition and focus make the image work. 14 1st.

Shadow Play by Donna Rohrich - Merit



Judges Comment: Eugene Dopheide: Good use of leading line and crisp, hard-edged structure with contrast of black & white for impact in the street scene. Converging lines and the bright background, however tend to lead the eye out of the image, which could be remedied with a vignette to reduce the white corners and hold the viewer's attention. An image with impact through composition and high contrast B&W tonal range for effect. 13, merit

Sun down the hallway by Jill Hancock - Second Place



Judges Comment: Eugene Dopheide: The use of the arched ceilings as framing for other frames makes for interesting composition inducing a feeling of depth. A very high contrast scene with dark walls and bright sunlight challenges the dynamic range of cameras and the maker here has whether in camera or in post-process, tried recover some of the shadow detail. Artifacts appear, probably as a result from processing in post, detracting from the image quality. Blending several images in HDR processing is really the only means of coping with extreme dynamic range such as this image. The composition has made for an interesting image and worth pursuing further, maybe at a different time of day when the dynamic range isn't as great. The image has impact none the less, through effective camera placement and composition 13, 2nd.

Boats in Venice canal by Malcolm Godde - Accepted



Judges Comment: Eugene Dopheide: Lovely reflection of a brick wall in Venice, but a boost in tonal contrast may help in adding texture for more contrast. Increasing the blacks and whites will bring out texture in the walls, reducing exposure and enhancing the tonal range for effect. Exposure for the water and reflections could be enhanced with an angled gradient to reduce exposure; scene is quite bright although it appears to have been taken at night. A vignette could be used to darken the edges to hold the eye of the viewer on the subject. Good camera skills are evident and diagonal converging lines make for effective composition. 12



Comments report for Photographer EDI Monochrome - Open

Yes its Red by Judy Hofmeyer - Accepted



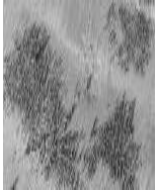
Judges Comment: Eugene Dopheide: Complexity of texture and line, rough, prickly, hairy, with jagged, wavy, and curly lines to create texture, feeling. Focus is soft which detracts from the effect. Interesting concept though employing texture to create feeling. 11

Around the fire by John Robertson - Accepted



Judges Comment: Eugene Dopheide: An Australian bush scene with a blazing fire on a cool night has the casual country feel about it. The crop seems a bit tight and more of the environment, even negative space created in the dark of night may have lifted the feel of the 'big country' on a lonely cold night. The feeling of casual spirit and character of country Australia has been well presented here. 12

Worm Diggings by Joanna Rath - Second Place



Judges Comment: Eugene Dopheide: Very effective use of side lighting to create texture and add impact to the image, while grouping of the castings on the 1/3rd line forms a point of focus. Repetition in the castings effectively leads the eye through the image. A vignette may help to concentrate the attention of the viewer as the edges may be a little distracting. A very creative image with impact; an image taken, yes, but created through use of texture and impact in composition, well done. 14, 2nd place.

Time Travel by Bill Thompson - Accepted



Judges Comment: Eugene Dopheide: A busy image, yet everything included contributes to the story of the maker. A reduction in exposure with a bump in tonal contrast maybe could give the image more impact, employing a monochrome tone gives a feeling of aging with time. A low wide angle optic(lens), the eye level point of view gives the image depth and the clock impact in telling a story. 13, merit.

Faces by Rhonda Hansen - Merit



Judges Comment: Eugene Dopheide: What is being presented to the viewer here? Is it someones artwork or a mixture of sculpted plates assembled for effect? The image has impact and it creates interest, but the crop seems a little tight, and a larger view may give insight to context of the capture. Employing presumably a wide angle lens, with eye-level point of view (POV) gives depth to the image and preserves the crisp lines and texture. 13.

Jessie by Debbie Burt - First Place



Judges Comment: Eugene Dopheide: Beautiful portrait image of a dog, with good blacks & whites making use of the contrasting tones of the dog's coat to effect. In a portrait of an animal the glint in the eye with sharp focus is captured here and positioning of the camera at eye level adds to the subject's impact. A landscape or square crop with the dog on the 1/3rd line may have given the dog room on the right to move, but maybe not essential. The sharp focus, POV(point of view), and contrast in tones make the image work. 15, 1st place.