



Reg #A0013634



## Newsletter: May 2019

Email: [secretarywacc@gmail.com](mailto:secretarywacc@gmail.com)

Website: [www.waccfoto.com](http://www.waccfoto.com)

Editor: [wacceditor@bigpond.com](mailto:wacceditor@bigpond.com)

FB: [www.facebook.com/WACC.Photography](https://www.facebook.com/WACC.Photography)

PO Box 46, Wodonga Vic 3690

### President's Message:

It has come to my attention that a number of members have been suffering various forms of ill health over recent weeks/months.

Unfortunately, for whatever reasons, this is part of life however, that does not ease the pain or inconveniences that result.

To our members who are currently in this category I wish you a get well or the very best recovery that is possible.

This is the time of the year that some members are planning, packing for or even departing on extended holidays to various destinations that offer alternative attractions to home.

I wish such members safe and enjoyable travelling and that some good photographic opportunities pop up along the way.

Until next month  
Brian.

### Diary Dates

**Monday 13<sup>th</sup> May 2019** @ Boomerang  
Hotel 7:30pm  
Comp Results – Open  
Comp Entries – Open

**VAPS Convention - 24 to 26 May 2019** @  
Federation University of Australia Churchill  
Campus, Auditorium 3E.

**Monday 17<sup>th</sup> June 2019** @ Boomerang  
Hotel 7:30pm  
Comp Results - Open  
Comp Entries – Open

**Milky Way Workshop (TBA)** probably June  
or July 2019

++++  
**June Newsletter Deadline** to submit  
stories of interest, Tips/Tricks or items for  
Sale or Wanted is **Monday 10 June**.

### Up and coming art shows include:

- Chiltern Art Prize – **Entries close May 24<sup>th</sup>**
- St Bernard's Art Show. Takes place in May
- Yarrawonga – takes place in June.

**The WACC Annual Exhibition** will now be held at Pfeiffer Wines at Wahgunyah, this coming October. We have decided to relocate from GIGS Art Gallery.

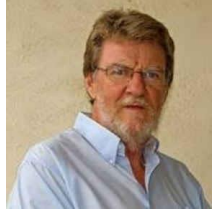
### Bright Festival of Photography 2019

- 1<sup>st</sup> July. Tickets will go live for BFOP 2019
- Workshop bookings will start at the end of August and will be open for three (3) weeks.
- Cash bookings for additional workshops will be open mid-September
- Festival takes place on 20<sup>th</sup> to 22<sup>nd</sup> September 2019

Go to their website to ensure that you are on their email list: <http://bfopaaustralia.com>

Mark

## Member of the Month Rod Alexander



Olympus

Rod has been a WACC Member for 5 years, joining soon after Wendy.

His working life as a Civil Engineer was in the construction industry building thermal power stations, and maintaining hydro power stations, building roads, water supply structures, commercial buildings, working in fire and flood recovery among other work programs.

Rod and Wendy love travelling both overseas and within Australia, allowing Rod to photograph the places he finds interesting.

He doesn't enter Club competitions as Wendy does well enough for both of them. It is important to Rod to properly compose images within camera before manipulating.



Facebook

### WACC on Facebook

If you wish to have your photos uploaded to Facebook could you please send them to Phil Bell ([tinker1947@bigpond.com](mailto:tinker1947@bigpond.com)).

#### Stipulations:

- The photos must be of interest to the WACC Community – not just random holiday snaps.
- A short story about the photo (where, when and what was your intention of taking the photo) would also be appreciated.

## Using White Balance

White balance acts much like an artist's canvas. White Balance determines the overall effect that your picture will have.

Most modern cameras do have the ability to automatically employ white balancing, however, learning how to manually balance your white levels can allow you to make an otherwise mundane picture vivid and outstanding.

Below are some basic white balance presets that most DSLR cameras have with some details on how to use them.

- **Auto** – The camera does its best to guess the white levels in the room. This does a job that can be described as “okay.”
- **Cloudy** – Designed to counterbalance pictures that seem too “cool” or blue. Use this when you want to warm up the colours in your scene.
- **Daylight/Sunny** – The counter to the cloudy white balance setting. Use this when your colours are too warm or you want cooler colours.
- **Flash** – Designed to work with flash photography. This balance counters the light blue that most flashes have.
- **Shade** – Photographs in the shade tend to have a deeper blue added to them. The Shade setting corrects this by making photographs appear warmer than if the “Cloudy” setting was used.
- **Fluorescent** – Indoor fluorescent lighting tends to make things appear much bluer. It can even drain the colour from things. This setting should be used to counteract an overabundance of blue tones.
- **Tungsten** – This setting helps when you are taking photographs with incandescent bulbs lighting the scene. It will counteract the yellow or orange colours for a cooler colour palette.

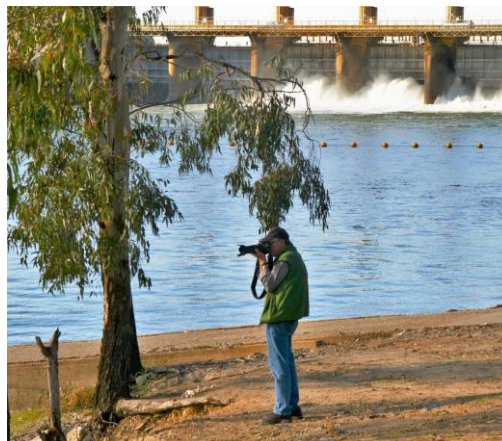
On Sunday 5<sup>th</sup> May, 14 WACC members fronted up in Yarrawonga to challenge 12 Benalla members for the 2019 annual award.

This year, under the guidance of Benalla, members were given the town area to capture images of their own desire. This took in various water activities on and around the lake as well as seeking out the hidden photographic sights of the town.

Top honours to Benalla for their planning of excellent food/coffee outlets, excellent weather and great hospitality.

Now to edit out our best images and await the final judges' results.

## Paatsch Challenge Shield Benalla / WACC Report.



**SCHNELLE**  
PARTNERS

### ANNUAL PHOTO COMPETITION

Schnelle Partners accountancy practice are happy to sponsor what will be our third annual photo competition and exhibition.

The theme will be "Along the Murray". A portion of the Murray river and/or the Hume/Yarrawonga weir must be included within the image.

The exhibition will be open to the general public from the 1st July for at least two weeks and will then continue for the next 12 months if the photographer so chooses. There is limited space for approximately 18 to 20 photos so the competition is again limited to Wodonga Albury Camera Club financial members only.

All photos will be available for sale to the general public or clients of the business.

#### DETAILS:

- **Theme:-** Along the Murray
- **Entry:-** Free
- **Prize:-** \$400 for the acquisition of the winning photo which will be permanently displayed in the offices of Schnelle Partners.
- **Judges:-** Roger Schnelle and his staff (all non-photographers)
- **Photo size:-** At least 46cm on the longest edge but preferably bigger
- **Frame:-** Black or White (preferably black and not obviously second hand)
- **Matt:-** A must, but whatever colour suits the photo
- **Selection of Photos:-** members need to send a maximum of 4 "WACC competition" sized digital files with WACC member number, photo title and email address to [yvonnewaters@ozemail.com.au](mailto:yvonnewaters@ozemail.com.au) before 14<sup>th</sup> June.
- I will acknowledge all sent emails. 1 photo per member will be selected, subject to suitability, unless there are not enough entries. Entrants will be notified by the 17<sup>th</sup> of June, which photo has been selected. This will leave 2 weeks for framing if not already in a frame.
- **Sales:-** There will be no commission as all potential sales will be referred back to the photographer.
- **Enquiries:-** Any enquires are to be made to Yvonne Schnelle on 0438 241 904. Please do not ring the office.

Arrangement for hanging will be made via email after the 17<sup>th</sup> of June.

#### Our Sponsors:

*Kerry & Leighton Weymouth (Website Hosts)*

