



The **Optic Nerve**

## Monthly Newsletter of the Wodonga Albury Camera Club

Reg # A 0013634  
email:secretary@waccfoto.com

PO Box 46 Wodonga Victoria  
Web: [www.waccfoto.com](http://www.waccfoto.com)

### JANUARY 2016

#### Inspiration for a New Year

Happy New Year! A new year means a new start and to give your new year a kick-start: some inspiration. First, in the form of an image by **Mark Slater**, “**Lighting the Kitchen Stove**”, which won for Mark the **J & J Dallinger Memorial Award** for best image of the year in 2015. Mark takes up the story: The photo was taken during a humanitarian aid trip to Siem Reap, Cambodia in 2012. I was out wandering late one afternoon doing a bit of street photography and looking for suitable subjects. While walking along a road on the banks of the Siem Reap River I came across several shacks. This little old lady was squatting at the front of her “home” lighting her kitchen stove which consisted of old bricks stacked up. She was about to cook her evening meal, which was wrapped in banana leaves. Like all good street photography the photo was taken discretely from the other side of the road 15-20 metres away. The image was edited in Lightroom to convert to B&W, enhance contrast, sharpen, crop and darken the background (the inside of shack).

#### Diary Dates

##### **Monday 11<sup>th</sup> January 2016**

@ Boomerang Hotel

**7:30pm** General Meeting  
Judging – Lines and  
Curves  
Entries due – Rural Life

##### **Thursday 28<sup>th</sup> January 2016**

**7:00pm** Committee Meeting @  
Alston residence

##### **Monday 8<sup>th</sup> February 2016**

@ Boomerang Hotel

**7:30pm** General Meeting  
Judging – Open  
Entries due – Open



#### **Details:**

##### **Camera:**

Canon 5D Mk II

##### **Lens:**

Canon 100-400mm  
f4-f5.6 L

**ISO:** 200

**Aperture:** F5.6

**Speed:** 1/250 sec

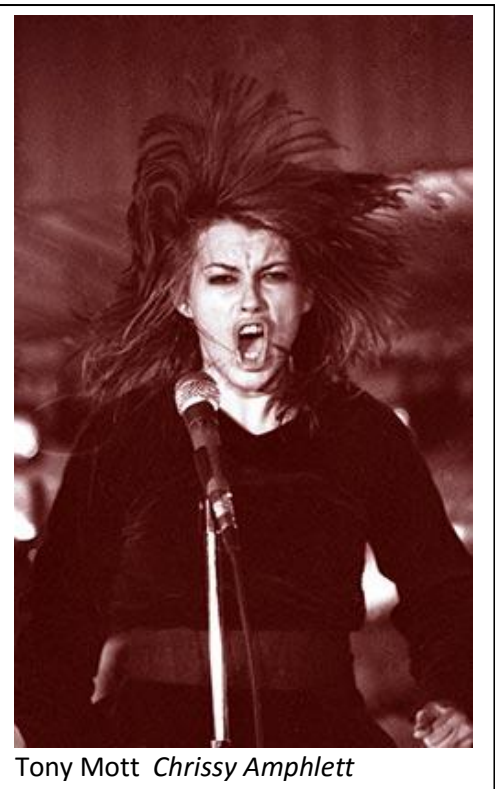
**Focal Distance:**  
320mm

Secondly, a couple of exhibitions. At the **State Library of NSW** is **What a Life! Rock Photography by Tony Mott**. Tony Mott is regarded as one of Australia's leading rock photographers who has had over 30,000 images published in 20 countries. His images have appeared on the covers of over 500 CDs, 400 posters and in more than 900 magazines.

His portfolio features a variety of rock musicians from local pub bands through to some of the biggest names in rock music – The Rolling Stones, Madonna and U2.

Untrained and self-taught, Mott got his breakthrough with a photograph of Chrissy Amphlett, lead singer of the Divinyls. Mott was a chef and at the completion of his shift practiced his camera skills over a period of four months by “snapping away” at the Divinyls during their residency at the Piccadilly Hotel in Sydney's Kings Cross. The band's manager used one of Mott's many shots as a tour poster, paying him \$20, and thus beginning a career that saw Mott become Australia's premier rock photographer.

While the exhibition showcases Mott's incredible contribution to photography, with a range of images from candid portraits to awe-inspiring live shots, it also documents the enormous changes that have occurred in the Australian music industry in the past 20 years. The exhibition continues until 7<sup>th</sup> February 2016.



Tony Mott Chrissy Amphlett

Nearby the **Art Gallery of NSW** is currently exhibiting a collection of photographs by Australian and International photographers that present fragmented perspectives of the body that focus on photography's ability to communicate the extent of the body both physically and metaphorically. The exhibit, entitled **Body Parts**, encompasses four overlapping themes: the performative and fertile body; the body in extremis; the classical body and the abject body. The exhibition runs through to the end of January 2016.

## Club Competitions

Being the start of a new year, it is probably wise to remember some of the rules regarding competition entries. There are **Size Restrictions: 30 x 40cm**, including the matt, is the largest size for WACC competitions and for VAPS inter-club competitions. **3mm** is the maximum thickness of matted entries.

Put a cardboard backing on your matted prints ... this will help to protect them from damage.

**Competition Entry File Naming Convention is:**  
**Colour Prints:** 43~Title~CPA or 43~Title~CP  
**EDI:** 43~Title~EDIA or EDI  
**Monochrome:** 43~Title~M

## Future Competitions:

### February

Judging: Open  
 Entries Due: Open

### March

Judging: Rural Life  
 Entries Due: Nature

Happy Photography!

Garry



Tony Mott AC/DC

## Our Sponsors:

*Kerry & Leighton Weymouth*

FOTO SUPPLIES  
**camerahouse**

**BOOMERANG**  
 HOTEL