



## Comments report for July 2024 Patterns

### Advanced EDI Colour - Patterns - 19 entries



#### 19 - Brick by Brick by Vicki Cain - Accepted

Judges Comment: Sally Rule - Pin sharp and well exposed, this image of bricks shows the texture to advantage. The dark shadowy ventilation gaps had me fooled for quite some time. 12



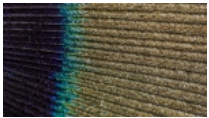
#### 18 - Chaos Theory and a Pattern for Life by Win van Oosterwijck - Accepted

Judges Comment: Sally Rule - When first looking at this image one sees a picture of a flower, and it would do well in that genre. A repeating pattern is not featured which is disappointing as the image is well made and well lit. A tight crop showing a few petals and the detail within would bring this image more in keeping with the definition. 12



#### 17 - Autumn Leaves by David Skinner - Accepted

Judges Comment: Sally Rule - I see no leaf shapes in this image, but the colours are authentic, and the image creative. ICM appears to be the method used to create the pattern. 13



#### 16 - Natural weave by David Woolcock - Accepted

Judges Comment: Sally Rule - The pattern in the weave is distinctly shown, but the image is soft with blown highlights. There is potential with the subject chosen. I suggest experimenting with the light source and the aperture used. 11



#### 15 - Boxes Of Many Colours by Wendy Stanford - Accepted

Judges Comment: Sally Rule - Unfortunately this image is out of focus. The bars are the obvious place to focus on, and here they create the pattern. The viewers eye does not come to rest when there is no point of focus. Autofocus settings in the camera can shift if the camera is searching and all points are available, narrowing this down may help. 10



#### 14 - Bending Light by Yvonne Schnelle - Accepted

Judges Comment: Sally Rule - In this image creativity using light to form the pattern is good in theory, but there is no area in focus for the eye to rest on. Focusing on a moving light source is difficult, try and focus on something at the same distance from the lens, then re compose before taking the picture. 10



#### 13 - Natures Art Deco by David Willis - Accepted

Judges Comment: Sally Rule - The Art Deco title suits, but quite what the subject is eludes me. Well exposed, with good colour. The shapes increase in size from left to right, which appears to be a natural progression.

On my screen this image has quite a dazzling effect, giving the impression it could be a little soft. Try adding some sharpening in post. Very intriguing. 12



#### 12 - Low Tide - Back Beach by Pauline Todd - Accepted

Judges Comment: Sally Rule - Muted colours and play of light and shade on the sand ripples make an interesting subject. The image is sharp and well exposed. 14



## Comments report for July 2024 Patterns



### 11 - Pancake Rocks by Garry Pearce - Accepted

Judges Comment: Sally Rule - Nature provides plenty of patterns. Applying a little sharpening in post gives these shapes greater definition. I suggest, for this competition, less is more, and cropping in to show the detail in a smaller area would have more impact.

13



### 10 - In Formation by Patsy Cleverly - Accepted

Judges Comment: Sally Rule - Light painting is used here to make the pattern. Some clipping of highlights is evident. The histogram is a handy tool, as is the use of the blinkies to avoid the problem. The image is sharp with no distractions. 12



### 9 - Umbrella Moss NZ by Pamela Milliken - Accepted

Judges Comment: Sally Rule - I can see areas of this image where the moss overlaps, giving opportunities for the maker to have a more comprehensive choice of patterns. As it stands, I think closer focus onto a smaller area would be more in keeping with the definition. Try tweaking the basic sliders in post for a brighter image. 12



### 8 - Resting Place by Neville Bartlett - Accepted

Judges Comment: Sally Rule - A very lovely patchwork quilt is the subject here. With so much background and the entire quilt pictured you have lost the image of a pattern. Detail in the quilting as well as the design gives the maker plenty of scope for the topic. 10



### 7 - Sandy Creek Bridge by Geoff Bayes - Accepted

Judges Comment: Sally Rule - Including too much in the image takes the viewer's eye from the pattern the maker has seen. There are several possibilities here, and zooming in to highlight a particular one would have given the image more impact for this definition.

12



### 6 - Artists Space by Sharon Alston - Accepted

Judges Comment: Sally Rule - Difficult lighting has been carefully managed in this image of geometric shapes. The image is sharp and well exposed. Shadows are reflecting the pattern. 13



### 5 - Layered by William Cleverly - Merit

Judges Comment: Sally Rule - A strong architectural image with the pattern formed by the repeating design elements. Be careful of blown highlights, most evident on the lower grey pipe. If this were my image I would straighten it using the lighter grey uprights as the guide. Colour is good and the image sharp. 13



### 4 - Islamic Masterpiece by Leanne Wheaton - Merit

Judges Comment: Sally Rule - A very detailed section of the building in sharp focus throughout. I am uncertain if this is an interior or exterior shot, but the image has been well captured in good light. 15



## Comments report for July 2024 Patterns



### **3 - Wonder Wall by Glenn Rose - Merit**

Judges Comment: Sally Rule - Exposure and Depth of Field are well managed in this image. The natural colour of the timber shows up well., with the timber grain forming the dominant patterns. Nothing I would change. 14



### **2 - Wat Arun by Jill Hancock - Second Place**

Judges Comment: Sally Rule - The architectural detail and inlaid designs are well captured in this symmetrical image. The image is sharp throughout. Saturation could be increased a fraction, to give the the intricate designs a little more punch. 15



### **1 - Water Drops by Helen Bishop - First Place**

Judges Comment: Sally Rule - Sharp throughout, with some bubbles even reflecting lettering, this is an eye-catching image. The different sized bubbles form a random pattern. A well made image. Nothing I would change. 15



## Comments report for July 2024 Patterns

# Photographer EDI Colour - Patterns - 7 entries



### 7 - Jervis rocks by Ben Gawne - Accepted

Judges Comment: Sally Rule - Irregular patterns in the rocks are evident on the left of this image. I'm not sure the water/foam adds a great deal, and could be hiding the rock markings. Use of the basic sliders in favourite processing will bring up the colour and detail, resulting in a more vibrant image. 12



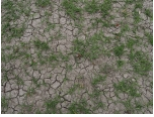
### 6 - On The Old Bark by Michael Klusacek - Accepted

Judges Comment: Sally Rule - Bark provides a suitable subject for repetition of irregular patterns. The leaves, with their barely discernible veins, provide colour. The image is sharp, and well exposed. Tweaking highlights will give definition to the veins in the leaves, adding another dimension of pattern. 13



### 5 - jungle 1 by John Robertson - Accepted

Judges Comment: Sally Rule - A colourful image which is tack sharp. The maker has chosen to focus on a small area of what appears to be a piece of fabric, with some design elements repeated, but actual pattern repeats are not shown. 12



### 4 - Post Floods by Judy Hofmeyer - Accepted

Judges Comment: Sally Rule - The random cracks in the dried earth create similarly shaped patterns, with the spikey dried grass adding interest. Tweaking the basic tone sliders in post will give this image greater impact. 11



### 3 - The Terraced Look by Deirdre Blunt - Merit

Judges Comment: Sally Rule - Well placed within the frame, these wrought iron panels are a worthy subject for the competition. The image is sharp throughout and well exposed, and made when the light was direct on all panels. Well done. 14



### 2 - Nature's Patterns by Joanna Rath - Second Place

Judges Comment: Sally Rule - An interesting image, well seen. The shadows have cast a distinct pattern on the dry grass, with its crunchy texture. Difficult to be sure if the light is from the last rays of sun, or artificial. The image is well exposed, with good depth of field. Try adding a little contrast for greater impact. 14



### 1 - Legoland by Bill Thompson - First Place

Judges Comment: Sally Rule - Wow, the bright colours and well defined shapes hold the viewers attention. The maker has chosen a perspective where the lower white bricks provide a straight line. This image has other possibilities if the uprights become the straight lines. 14



## Comments report for July 2024 Patterns

# Advanced EDI Monochrome - Patterns - 19 entries



### 19 - Ribs by Win van Oosterwijck - Accepted

Judges Comment: Sally Rule - The repetition of pattern through stitches and ribs is clearly depicted. The maker has used light to keep the viewers attention on the area in focus. There are small blown highlights on these stitches. 11



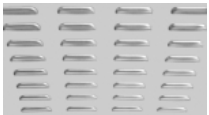
### 18 - Craquelare by Jill Hancock - Accepted

Judges Comment: Sally Rule - The irregular cracks in the dried earth form a crazy pattern. Using a vignette to draw the viewers eye centre of the image works well where there is no point of focus. Sharp throughout and well exposed, however lowering the highlights and tweaking the black slider, plus a little contrast will give the image greater impact. 11



### 17 - Channeled by Wind by David Woolcock - Accepted

Judges Comment: Sally Rule - Having the ripples in the sand run diagonally from top left to lower right is a good compositional choice. DoF and exposure well managed. Adding a little contrast will give this monochrome image a lift. 12



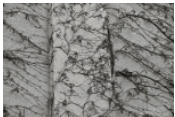
### 16 - All In A Row by David Willis - Accepted

Judges Comment: Sally Rule - Simplicity is the essence of this image. Sharp throughout and well exposed. Adding contrast and clarity, reducing the highlights and slightly increasing the shadows will give this image greater impact. 13



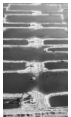
### 15 - Finding the Diamonds by Vicki Cain - Accepted

Judges Comment: Sally Rule - Geometric shapes are well defined. Negative space at the top of the image could be cropped to the level of the grey on the right of the image, giving greater emphasis to the diamond shapes. 13



### 14 - Clinging on in the Cold by Leanne Wheaton - Accepted

Judges Comment: Sally Rule - The structure of the wall to which these vines are clinging has formed three separate areas, with diagonals being prominent on left and right sections. I wonder if concentrating focus on a smaller area, either left or right side, may have shown the pattern formed to greater advantage. Image appears sharp throughout. 12



### 13 - Waste not want not by Garry Pearce - Accepted

Judges Comment: Sally Rule - I assume this image is made with the use of a drone, which has allowed the maker to capture a pattern we would not normally see. Depth of field and exposure are well handled. 12



### 12 - Bonded by William Cleverly - Accepted

Judges Comment: Sally Rule - A good example of pattern photography, with no focal point and distinct repetition of the components. The rough stone blocks provide texture and variation in the tonal values. Adding a little contrast will highlight the variations in texture and tone. Image is sharp throughout. 13



## Comments report for July 2024 Patterns



### 11 - Umbrella Fern NZ by Pamela Milliken - Accepted

Judges Comment: Sally Rule - The fern fronds lend themselves to the monochrome treatment. good use of light. Image is sharp where it needs to be. Perhaps cropping to bring the area of interest further into the frame would be an advantage. 13



### 10 - Please be seated by Glenn Rose - Accepted

Judges Comment: Sally Rule - You have seen the potential here, but a different perspective may have made greater use of it. Including quite so much of the chairs has reduced the impact in my opinion. The closely packed tops of the chairs look interesting, a panoramic crop may have worked to your advantage. The grubby area on the side of the centre chair is distracting. 11



### 9 - Quilters Craft by Neville Bartlett - Accepted

Judges Comment: Sally Rule - As I am a Longarm quilter this image has particular interest for me. I'm not sure showing the entire quilt has helped the maker, as it becomes a picture of a quilt rather than a pattern. The tiled background is very distracting. A shadow on the lower left side also distracts. In this case focusing on a small area and allowing the quilting as well as the design to be the point of interest would have scored better. 11



### 8 - Kindergarten pathway by David Skinner - Accepted

Judges Comment: Sally Rule - A good range of tonal values in this image and sharpness throughout create a pleasing picture. Nothing I would change. 13



### 7 - Mantra by Geoff Bayes - Accepted

Judges Comment: Sally Rule - This image has potential, but as it is there are blown highlights in the white sky above the building and the dark area on the side shows little of the detail available. Use of the highlights and shadows sliders, some contrast and a little more exposure will give it greater impact. The choice of subject is good, with the contrasting shapes adding interest. If you are skilled in post removing the power lines on the upper right would be an advantage. 12



### 6 - Winter Crystals by Sharon Alston - Accepted

Judges Comment: Sally Rule - The darker veins in the leaf contrast with the ice crystals, forming a prominent pattern. Cropping is a little tight on the bottom and lower left edge.

The leaf is the hero against the soft background. 12



### 5 - From The Outside by Wendy Stanford - Merit

Judges Comment: Sally Rule - A dramatic image. I like the use of a border, echoing the shape of the individual window frames. Reducing the shadows in post will bring out the detail in the brickwork. 13



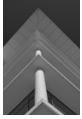
### 4 - In Or Out That Is The Question by Yvonne Schnelle - Merit

Judges Comment: Sally Rule - Here we have simple shapes, well captured. Highlights are contained and detail is clear. Repetition of the shapes, as well as the divisions within each are sharp. 13



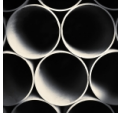


## Comments report for July 2024 Patterns



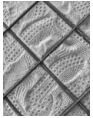
### **3 - The Corner by Pauline Todd - Merit**

Judges Comment: Sally Rule - The symmetrical placement of this building in the frame is well managed. Taken from the underside we are looking at areas in shadow. Tweaking the basic sliders in post will brighten the image and increase the impact. 14



### **2 - Stacked by Patsy Cleverly - Second Place**

Judges Comment: Sally Rule - A simple subject well made. The dramatic shadows within the pipes vary slightly, creating further interest. Nothing I would change. 14



### **1 - Impressions by Michael Griffin - First Place**

Judges Comment: Sally Rule - A clever image, well thought out and well made. Nothing I would alter. 15



## Comments report for July 2024 Patterns

# Photographer EDI Monochrome - Patterns - 5 entries



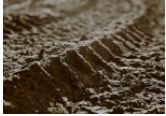
### 5 - The Eye by Michael Klusacek - Accepted

Judges Comment: Sally Rule - This monochrome image of an old tree trunk is sharp throughout, with good tonal values. Obviously the maker is a Pariedolia fan, as I am, and aptly named the image. The 'eye' is the point of focus, but there is no recurring pattern in this image. 12



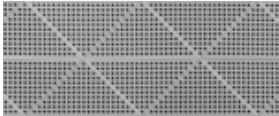
### 4 - Man-Made by Joanna Rath - Accepted

Judges Comment: Sally Rule - Although a well exposed image of the rough edge of roof tiles, on my screen blue, grey and white show up, which rules it out as a monochrome, which is shades of one colour. The subject is ideal and the image well made. I put this image through Lightroom and used the Black and White slider to prove my point, and in monochrome it would have been the winning image in this section. Unfortunately it scores 9 as it does not comply with the definition.



### 3 - Tyred by Bill Thompson - Accepted

Judges Comment: Sally Rule - Metadata is not available to check with this image that appears to be a tyre mark on soft ground. Focus is on a small area only, although the repetition is obvious. Choosing a wide aperture has created a very narrow depth of field. Try a medium aperture to have a more of the subject in focus, which I think would be appropriate to emphasise the repetition of the pattern. 11



### 2 - Light And Airy by Deirdre Blunt - Second Place

Judges Comment: Sally Rule - Attention to detail is evident in the composition of this image of what appears to be some kind of grille. The image is sharp throughout, and well exposed. The panoramic format suits. I have no way of knowing if the maker cropped the image or the grille is as photographed. Well done. 14



### 1 - Towering Above by Judy Hofmeyer - First Place

Judges Comment: Sally Rule - The range of tonal values in this architectural image creates interest. Good depth of field and well exposed. An awkward shot to achieve from a lower perspective. In this case the angles and uprights have been well managed. 14